

CLOTHES

ESD SMOCK L1 polyester

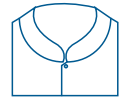
The smock L1 is made of: 99% polyester and 1% carbon fiber. Due to its fabric's composition it has a very low particle detachment and it's very light.

> Benefits

- Traceability through bar code
- Custom designs
- Consignment
- Low particle detachment
- Very light fabric



Sport neck



Mao neck

- Classic model (to the hip) >
- Medium model 8 cm + the classic model >
- Long model 20 cm + the classic model >

WITHOUT PARTICLE DETACHMENT IN THE WORK AREA

> General information

Size / Length	2XS to 5XL
UM	Pieces
Production / Sale batch	5 pieces per size
Colors*	White, Royal blue, Navy blue and Sky blue



*May have colorfastness

*Possible difference in tone between batches of the same color

> Technical Information

Lower limit (ohms)	2.5×10^4
Upper limit (ohms)	1×10^8
Voltage generation	N / A
Download time	N / A

> Contradictions

Do not use chlorine, do not use bleach, do not tumble dry, do not iron. Do not rub the smock against abrasive or sharp surfaces.

Industry	Electronics, aeronautics , automotive, telecommunications and medical
Cleaning	Wash before use, wash with cold water, hang dry.

> Standards , warranties and care

Rules applying	ANSI/ESD S20.20-2014 ANSI/ESD STM 2.1-2013
Dyed standards	NMX-4-074, NMV-A-065 NMV-A-073
Physical guarantee	6 months
Electric guarantee	12 months
Warranty applies to	Brooches, buttons, zipper, sewed, ESD resistance range, and making off-spec.

These data are based on information we believe correct; are offered in good faith but without guarantee in respect of the application and use of the product, since the conditions and methods of use are beyond control of the company. Before the final use of the product, we recommend the user to perform a detailed assessment of the same through the implementation and use of significant samples. Users are responsible for checking the validity of the information provided.

ESTATEC UNIQUE TRACKING CODE (CURE)

The Estatec unique tracking code is an identification code that helps on product tracking. It's used to know data from production dates as well as date of delivery and guarantees. It also has a bar code for easy reading using electronic methods.

In the smock case, a part of the label stays encapsulated so that there is always a backup in case of damage to the exterior tag or label



CURE EXAMPLE

MODELS CHART

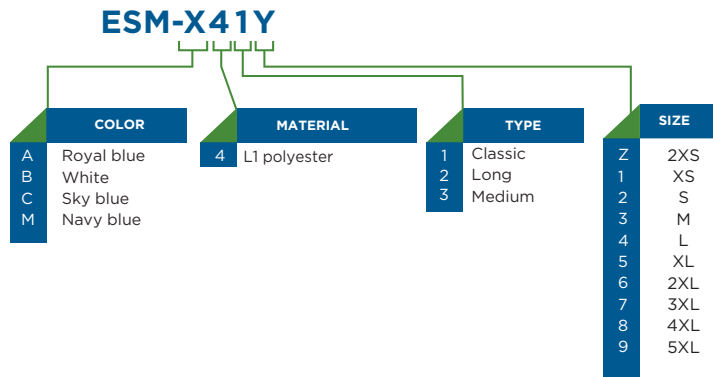
> Code	> Name	> Description	> Production batch pieces	> Standard packing pieces
1 ESM-A413	Royal blue L1 smock classic type -M-	L1 fabric (99% pol, 1% f.C.) Sport neck, upper left bag, 2 inferior bags, right size bies, 4 front buttons, 3 buttons on sleeve and opening on the sides.	5	50
2 ESM-B422	White L1 smock long type -S-	L1 fabric (99% pol, 1% f.C.) Sport neck, upper left bag, 2 inferior bags, right size bies, 4 front buttons, 3 buttons on sleeve and opening on the sides.	5	50
3 ESM-C436	Sky blue L1 smock medium type -2XL-	L1 fabric (99% pol, 1% f.C.) Sport neck, upper left bag, 2 inferior bags, right size bies, 4 front buttons, 3 buttons on sleeve and opening on the sides.	5	50

CODE GENERATION CHART

Estatec smock's codes are composed as follows:

ESM - Abbreviation for smock

- X- Represents any color, select a color as indicated on the chart to generate the code
- 4- Represents the type of material the smock is made of
- 1- Represents the type of cut, select a number as indicated on the chart according to the length needed
- Y- Represents the size of the smock, select a number to indicate size as showed on the chart



These data are based on information we believe correct; are offered in good faith but without guarantee in respect of the application and use of the product, since the conditions and methods of use are beyond control of the company. Before the final use of the product, we recommend the user to perform a detailed assessment of the same through the implementation and use of significant samples. Users are responsible for checking the validity of the information provided.