



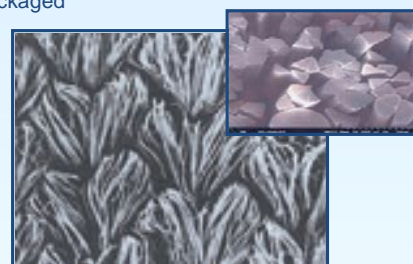
TekniClean Sealed Edge Microfiber Cleanroom Wiper

Product Description

Tekniclean microfiber wipes are designed & constructed with yarn as fine as 0.1 decitex, knitted extremely tight to ensure wipe durability. The structure of the yarn (30% Nylon / 70% Polyester) provides hydrophilic properties of nylon, lipophilic polyester properties and the capillary effect of the dense construction provides a high level of water absorbency and superior wiping efficiency. We use a high temperature high pressure process to split the yarn and release the 8-16 wedges of polyester yarn and shrink the cloth up to 40% to increase density. This process provides an extremely soft fabric that will leave no scratches on wiped objects. The wedge like yarn structure effectively traps micro-contamination (particles & bacteria) without re-contaminating the surface. All Tekniclean wipes utilize Statistical Process Control in manufacturing and are lot traceable from raw material to finished product. Class 10 Laundered & Packaged

Composition & Attributes

- * Tightly knit & pre-shrunk 70% Hi Strength Polyester & 30% Nylon fiber
- * Ultra Low particle and fiber generation
- * Ultrasonic Sealed Edges or Borders for best fiber & particle retention
- * Free of Silicon, Amides, and DOP contamination
- * Solvent safe double bag cleanroom packaging
- * Resists abrasion when used with rough surfaces
- * Works well with IPA and other cleaning solvents

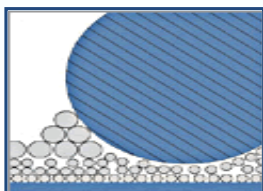


Applications

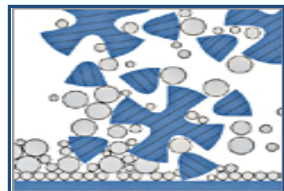
- * Ideal for removing water & oil based contamination
- * Works well for process cleaning; ultra pure substrate / best performance
- * Silky texture will not scratch sensitive surfaces when force is applied
- * Works well for difficult particle removal; excellent abrasion resistance
- * Best abrasion resistance; excellent choice for wiping process tool chambers
- * Recommended for Optical, LCD, & Hard Disk Drive cleaning
- * Compatible with ISO Class 4-5 (Class 10-100) environments

Physical Properties

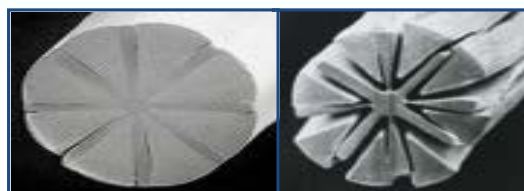
- * Basis Weight 190-220 g/m²
- * Material 30% Nylon / 70% Polyester
0.1 decitex; 16 wedge
- * Absorbency Extrinsic Capacity: >280ml/m²
Intrinsic Capacity: >2.4 ml/g
Sorptive Rate: < 2 seconds
- * Test Method IEST 4.3 Section 8.1



Traditional wiping



Microfiber wiping



Magnified Original Yarn

Magnified Split Yarn

Purity Specifications

		Maximum	Typical
* Particles & Fibers			
particles/m ²	Particles (>0.5micron)	8.5 x 10 ⁽⁶⁾	7 x 10 ⁽⁶⁾
particles/m ²	Particles (>5micron)	<1 x 10 ⁽⁶⁾	0.6 x 10 ⁽⁶⁾
fiber/m ²	Fibers (>100 micron)	<450	370
* Nonvolatile Residue			
g/m ² / ug/cm ²	IPA Extractant	<0.1	0.07
g/m ² / ug/cm ²	DIW Extractant	<0.05	0.015
* Extractable Ions			
ppm / ug/g	Sodium (Na+)	<0.20	0.13
ppm / ug/g	Potassium (K+)	<0.10	0.03
ppm / ug/g	Magnesium (Mg ²⁺)	<0.10	0.01
ppm / ug/g	Chloride (Cl+)	<0.20	0.13
ppm / ug/g	Calcium (Ca+)	<0.20	0.14

Test Method

Orbital Shake Test	IEST 4.3-6.1.4
	IEST 4.3-6.2.2
Short Term Extraction	IEST 4.3-7.1.2
Standard Extractable Method	IEST 4.3-7.2.2.1B

Ordering Information

Product
TC2MFU1-99

Size
9" X 9" (22.9cm x 22.9cm)

Packaging
100 Ea/Bag (2 inner bags of 50) 10 Bag/Case